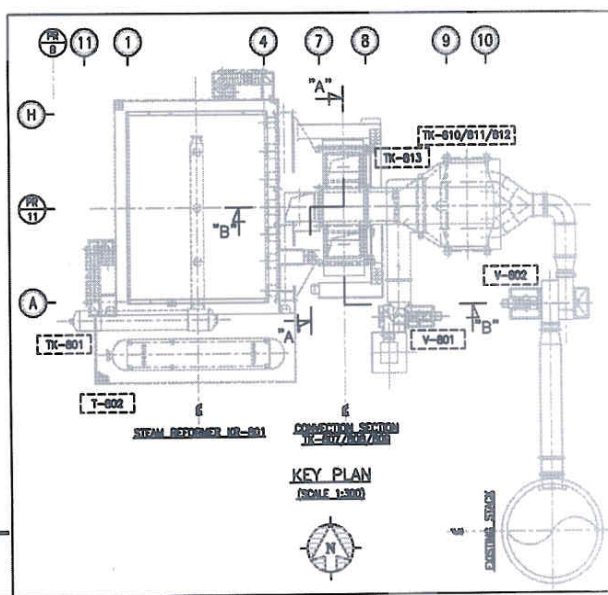
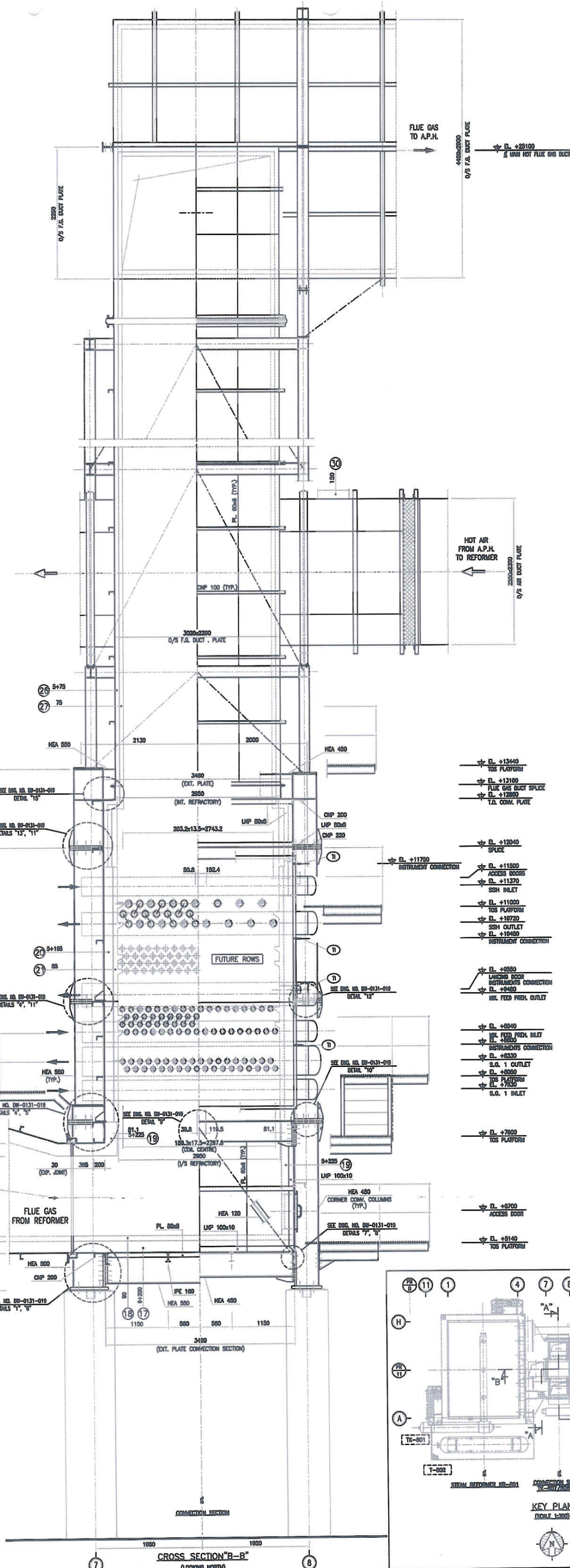
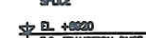
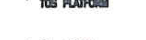
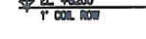
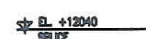
[illegible]



REFERENCE DRAWINGS

- | | |
|-----------------------------------|---------------------------------|
| 10. DMR. NO. 2070-000-00-0127-001 | CONCRETE COL. |
| 10. DMR. NO. 2070-000-00-0127-002 | CONCRETE COL. W/RODDES |
| 10. DMR. NO. 2070-000-00-0127-017 | TRANSITION BLK |
| 10. CA. NO. 2070-000-00-0131-001 | STRUCTURAL SYMBOL CALCULATIONS |
| 10. DMR. NO. 2070-000-00-0131-003 | GENERAL NOTES AND REVISIONS |
| 10. DMR. NO. 2070-000-00-0131-002 | GENERAL SECTION GENERAL |
| 10. DMR. NO. 2070-000-00-0131-010 | CONCRETE SECTION - STEEL JOISTS |

HOLD LIST

- SUPPORT STRUCTURES AND FUEL GAS DUCTS

NOTES

- ALL THE CORRESPONDENTS FOR THE WESTERN TRIBUNE MUST WRITE TO THE EDITOR, 100 N. 3RD ST., ST. LOUIS, MO. 63102. WHEN CORRESPONDING TO TELEPHONE 64-75 OR ABOVE SEA LEVEL."

[illegible]